

SINGATAC





Our Brief History

Year

Milestones

- 1997 Singatac Engineering Pte Ltd was incorporated. Started a small outfit of less than 20 people and did basic sub-contract work in steel repair for ships in shipyards.
- 2007 Operation expanded to over 600 men and 15,000m² factory space. Initiated move to expand production to Bintan, Indonesia.
- 2008 Set up first operation in Bintan Industrial Estate.
- 2009 Acquired a seafront yard of 70,000m² in Bintan Industrial Estate, Bintan, Indonesia.
- 2011 Bintan received the arrival of first oil rig in its history.
- 2013 Initiated idea to develop an Offshore Marine Centre in Bintan.
- 2017 Signed the Joint Venture Agreement with Qube International Pte Ltd, a subsidiary of Qube Holdings Ltd of Australia on 7 Dec 2017.
- 2018 Ground-breaking ceremony of Bintan Offshore Marine Centre carried out on 8 May 2018.
- 2019 PT Singatac Bintan awarded the complete package to manufacture the subsea production system including subsea manifold for ENI's Merake Gas Field Development in Indonesia.

Our Services

- Fabrication and installation of heavy steel structures
- Mechanical assembly & installation
- Precision machining
- Electrical & instrumentation work
- Non-destructive testing and load testing
- Grit-blasting & coating
- Logistics services



Our Business Areas

Subsea Structures & Equipment

- Installation aids (deflectors, sea-fastening, spreader bars/frames, chutes, DMA, outriggers, hang-off inserts/platforms, lay-wheel, etc.) and grillages.
- Mid-water arches
- Anchor piles & suction piles
- Mooring buoys
- PLETs, PLEMs & FLETs
- Jumper Spools
- Subsea manifolds & templates



Our Business Areas

Equipment for oil platforms, floating production/storage vessels, pipe-laying vessels, dredgers, etc.

- Material handling packages (BOP handling, pedestal cranes, sub-sea tree handling, riser handling, etc.) for rigs
- Living quarters
- Flare towers
- Topside modules (compressor skids, boiler skids, metering skids, etc.)
- Stingers
- Helidecks
- Wellhead platforms & jackets



Our Business Areas

Offshore logistic base services

- Open lay-down area & covered storage area.
- Deep-water & sheltered berth (up to 14m) and anchorage (up to 40m).
- General supply (bunker, fresh water, provisions, etc)
- General services (hotel accommodation, land/sea transport, visa applications, security, port agency, freight forwarding, emergency evacuation, crew change, etc.)
- Heavy-duty rigging, lifting and shifting.
- Spooling
- Chain flaking and loading
- Pre-laid mooring
- Rental of equipment (generators, boomlifts, compressors, loaders, forklifts, fenders, etc.)



Our Business Areas

Modification, Repairs, Upgrading & Conversion



Our Yard Facilities



Headquarter
Fabrication Workshop

No.26 Tuas Avenue 10
Singapore 639147

Land Area : 6,000m²



Fabrication Zone

No. 21 Tuas Basin Lane
Singapore 637069

Land Area : 10,000m²
c/w 100m water frontage



Fabrication Yard

PT. Singatac Bintan,
Lot 2 Bintan Industrial Estate
Lobam, Bintan, Kepulauan
Riau 29154, Indonesia

Land Area : 70,000m²
c/w 200m water frontage



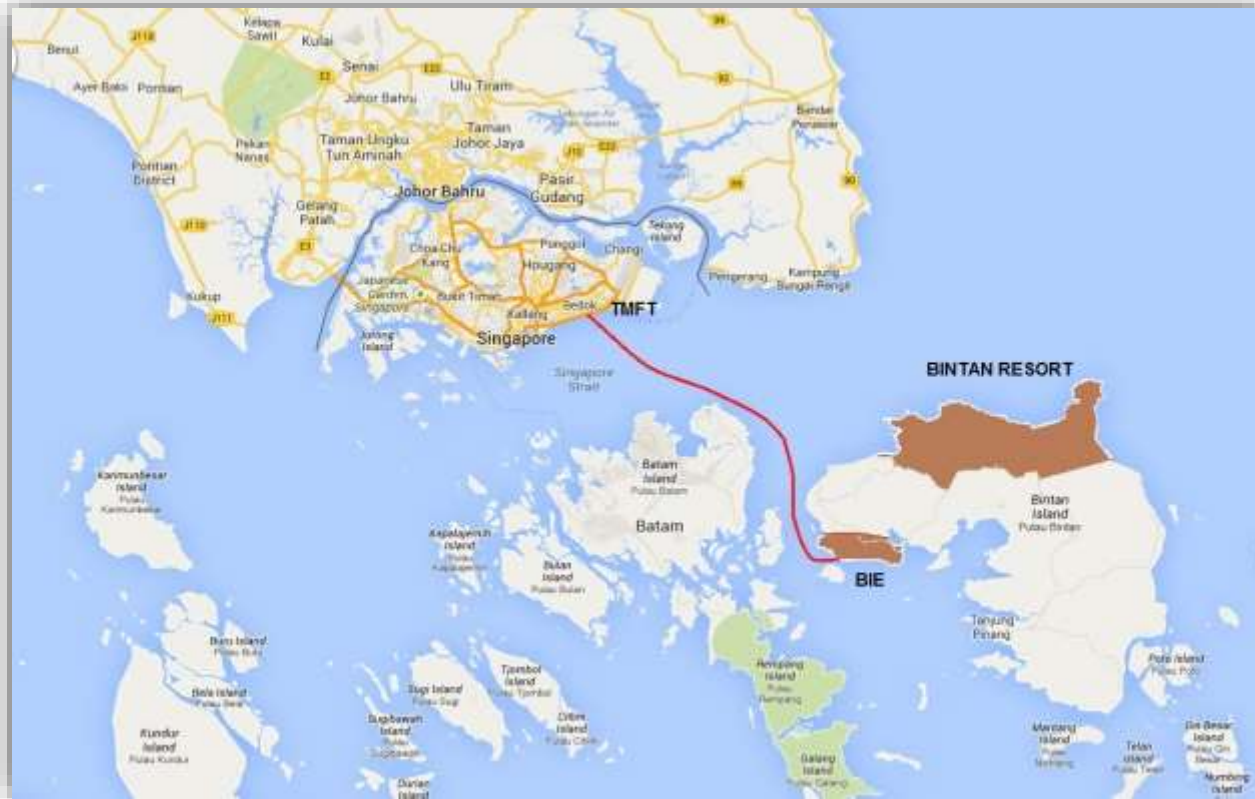
Bintan, Indonesia Facility



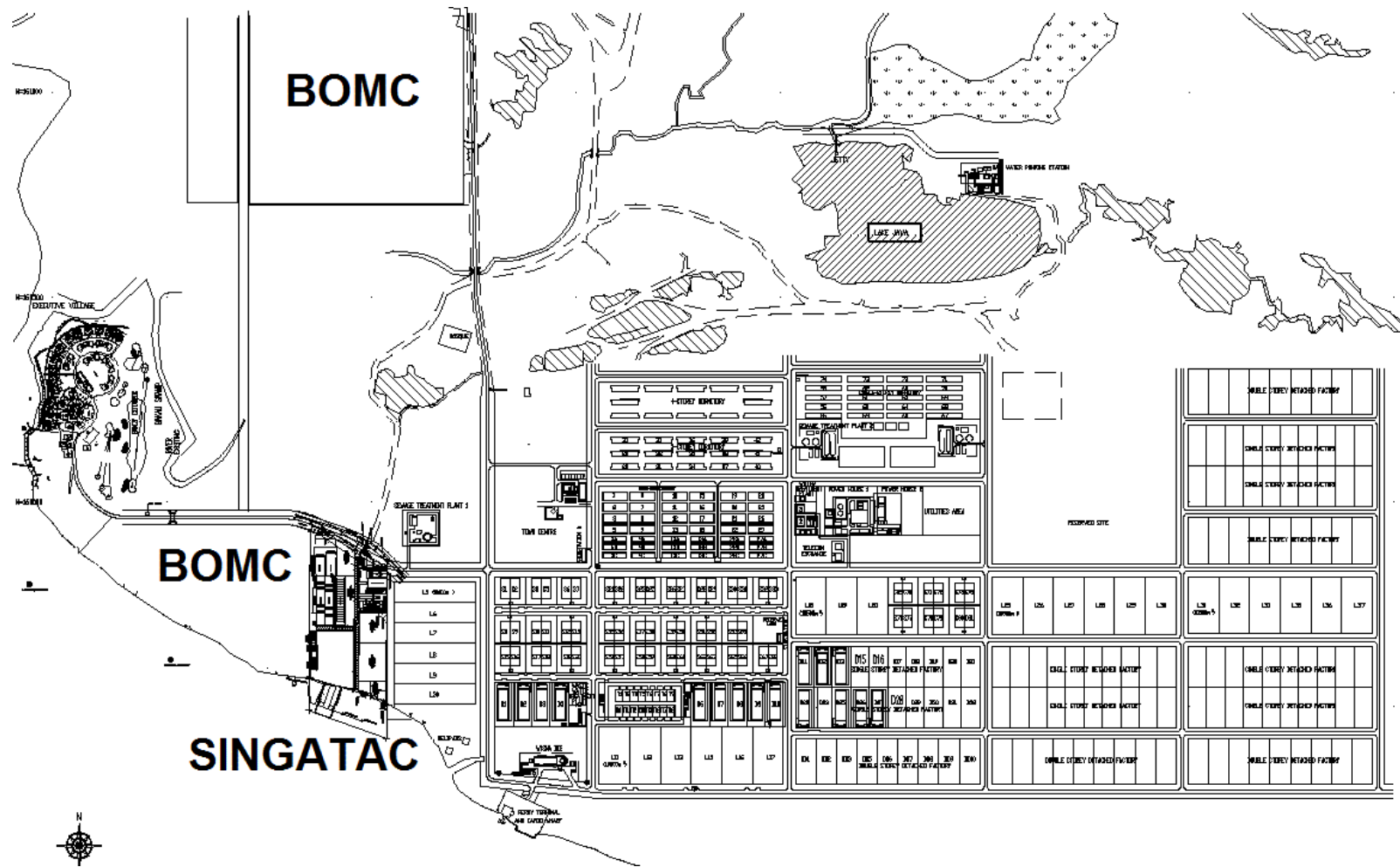
*Original Land
Condition in 2009*



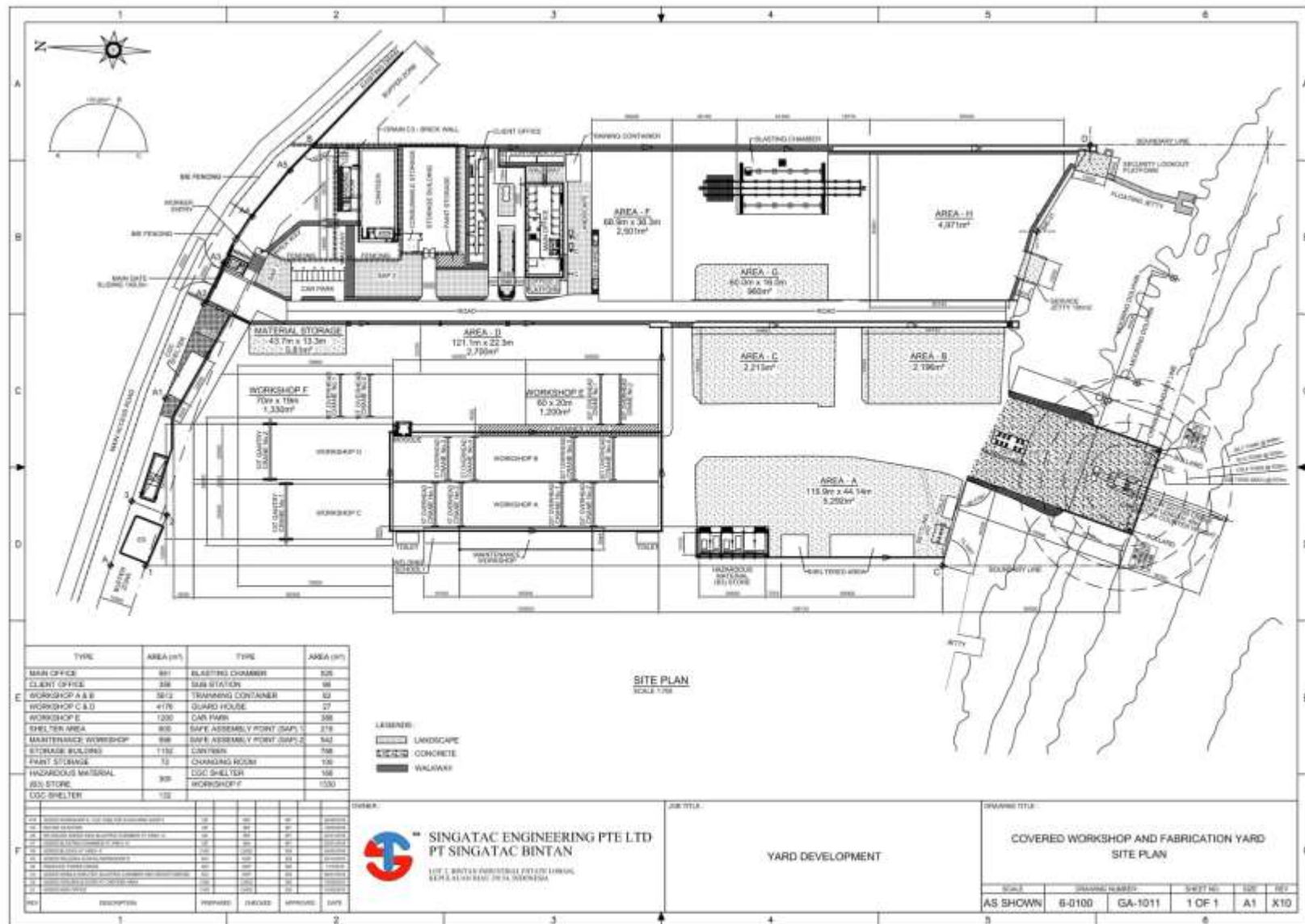
Bintan Industrial Estate



Bintan Industrial Estate



SOC Layout



SOC Overview



Key Facilities & Equipment

Faculties / Equipment	Specification / Details
Workshops A & B Fabrication Shop	Each 20m W x 120m L c/w Overhead Crane SWL 20T x 2 units with hook height 9.3m
Workshops C & D Fabrication Shop	Each 25m W x 70m L c/w Gantry Crane SWL 10T x 2 units with hook height 7.2m
Workshop E Clean-Room Assembly Hall	20m W x 60m L c/w Overhead Crane SWL 30T x 2 units with hook height 20m
Workshop F1 White Metal Workshop	20m W x 22m L c/w Overhead Crane SWL 10T x 1 unit with hook height 7m
Workshop F2 Precision Machining Shop	20m W x 50m L c/w Overhead Crane SWL 10T x 1 unit with hook height 7m
Blasting/Coating Chamber	15m W x 35m L x 12m H
Loadout Jetty	Load-bearing 40 ton/m2 with -10m LAT
Crawler Cranes	Various capacities. Max capacity crane is 350T c/w superlift extension x 2 units.
Hydraulic plate rolling	Upto 2-1/2" thk x 10' capacity.
Hydraulic plate bending	Upto 1000 ton capacity.
CNC precision machining	Various capacities. Refer to next page.
Heavy Transporter	Multi-axle shipyard transporter SWL 250T x 1 unit; Low bed trailers SWL 150T x 2 units



Key Facilities & Equipment



Fabrication Workshops A & B

Key Facilities & Equipment



Open Yard Fabrication / Assembly Ground



Key Facilities & Equipment



Clean Room Assembly Hall



Key Facilities & Equipment



Blasting & Painting Chamber



Key Facilities & Equipment



White Metal Workshop F1 for Exotic Material Welding c/w
Automatic Orbital Welding Machines



Precision Machining Equipment

S/N	Machine Type	Max. Load (Kg)	Max. Axis (mm)			Accuracy (mm)
			X	Y	Z	
1	CNC Horizontal Lathe	5,000	535	NA	4,000	0.10
2	CNC Horizontal Lathe	300	209	NA	600	0.02
3	CNC Horizontal Lathe	250	200	NA	500	0.10
4	CNC Horizontal Lathe	598	200	NA	1,320	0.10
5	CNC Horizontal Lathe	20,000	1,250	NA	10,000	0.10
6	CNC Vertical Turret Lathe	1,200	870	NA	1,050	0.02
7	CNC Vertical Turret Lathe	2,000	950	NA	980	0.10
8	CNC Vertical Milling	1,800	1,400	750	700	0.10
9	CNC Vertical Milling	450	850	500	500	0.02
10	CNC Vertical Milling	2,000	1,544	867	676	0.10
11	CNC Horizontal Milling	1,200	1,050	1,070	940	0.10
12	CNC Floor Boring Machine	30,000	8,500	1,900	1,250	0.01
13	CNC Floor Boring Machine	25,000	4,500	1,000	1,200	0.10
14	CNC Double Column Machine Center	12,000	4,500	2,900	1,000	0.02

An offshore oil rig is shown in the background on the left side of the slide. It is a large industrial structure with a tall derrick and various cranes, situated in the ocean under a blue sky with some clouds.

Software for Engineering, QA/QC and Project Management

S/N	Software	Purpose
1	Aveva BOCAD	Structural steel detailing software for efficient 3D modelling and fabrication detailing
2	cuteQualityManager-Structural Steel	QA activity planning, monitoring & reporting for structural steel
3	cuteQM-Piping	QA activity planning, monitoring & reporting for piping
4	Primavera P6	Project management & reporting
5	ZWCAD	3 rd Party AutoCAD
6	Autodesk Inventor Pro	3D mechanical design, simulation, visualization, and documentation
7	SketchUp Pro	3D content creation tool

Quality, HSE & Business Permits & Certifications

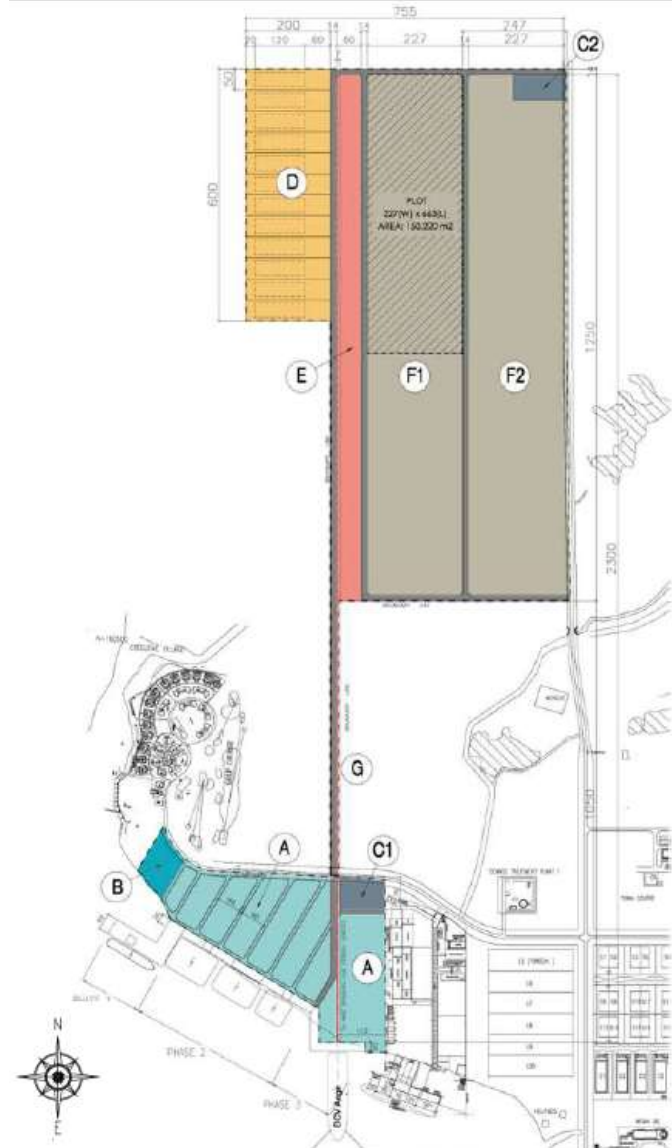
S/N	Certification	Standard	Auditor / Certifying Authority
1	Quality Management System	ISO 9001:2015	DNVGL / UKAS
2	Occupational Health & Safety Management System	OHSA 18001:2007	DNVGL / UKAS
3	Environmental Management System	ISO 14001:2015	DNVGL / UKAS
4	Health and Safety Management System / SMK3 - Gold Flag	Decree No.50 Year 2012	Sucofindo / Ministry of Manpower, Indonesia
6	Workplace Safety and Health Capabilities	bizSafe Level 3	Ministry of Manpower, Singapore
7	Shipbreaking Licence	N.A.	Indonesia
8	ASME U-Stamp (in progress)	ASME Boiler & Pressure Vessel Code	LRS / ASME
9	SKK Migas – Construction Services	N.A.	Ministry of Energy and Mineral Resources, Indonesia



Bintan Offshore Marine Centre

The 100-Hectare BOMC is a new facility developed next to Singatrac Offshore Centre, and which is jointly owned by Singatrac and Qube Holdings (<https://qube.com.au/>).

When fully developed, BOMC will be world-class facility to facilitate & support companies in carrying out equipment manufacturing, fabrication, maintenance / repair / overhaul (MRO) services and project logistics related to oil & gas industry, mining & dredging.



LEGEND :

	AREA (m2)
A	STAGING AREA 125,000.00
B	OFFICE & AMENITIES 9,485.00
C1	M&E SERVICES 7,950.00
C2	M&E SERVICES 7,200.00
D	COVERED WORKSHOPS 120,000.00
E	SPOOLBASE 82,290.00
F1	STORAGE YARD 280,040.00
F2	STORAGE YARD 288,430.00
G	ROADS 81,660.00
TOTAL AREA	1,002,055.00

Bintan Offshore Marine Centre

Key Activities Supported:

- Fabrication, manufacturing and MRO services
- Decommissioning
- Pipe Spoolbase (upto 1600m stalk lengths)
- Home port for vessel operators
- Project logistics

More information about BOMC can be obtained from its website at www.bomc.com.sg.



Bintan Offshore Marine Centre



Construction-in-progress



Ground-breaking Ceremony
on 8th May 2018



Development as Jan
2021:

Multi-user spoolbase –
2km stalk length;

200m wharf @ 14m
depth



A vertical photograph of an offshore oil rig against a clear blue sky. The rig is a complex of steel structures, including a tall derrick and various platforms, situated in the ocean.

Contact Us

SINGATAC ENGINEERING PTE LTD

Address: No.26 Tuas Avenue 10, Singapore 639147

Tel: +65 68979566

Email: info@singatac.com.sg

Website: www.singatac.com.sg

PT SINGATAC BINTAN

Lot 2 Bintan Industrial Estate

Lobam, Bintan Kepulauan Riau 29154

Indonesia

Tel: +62 770 696788/789

Fax: +62 770 696790

****THE END****