

# INTRODUCTION OF HMPS SADEUNG SHIPYARD



Hae Myung Project Services Co., Ltd (HMPS) is utilizing well-prepared Quay for ship repairs, eco-friendly retrofits and ship conversion, two (2) Indoor Shops for fabrication works and four (4) Heavy Zones for Block/Module Assembly & Outfitting Installation on the basis of very safe and economical conditions.

## Quay & Facilities

Quay Facilities	Service Length (m)		Crane (Available)
Quay 313m	Vessel Size (m)	Water Depth (m)	Hydraulic Crane 25t, 50t, 100t, 200t
	297m	6.5m ~ 13.9m	
Facilities	Facility Name	Dimension(m)	Crane
Indoor Shop	1 Bay	100m x 26 m	20t x 3ea
	2 Bay	100m x 26 m	30t x 2ea
Heavy Zone	#1/#2/#3/#4	25m x 20 m (x 4 places)	Hydraulic Crane 25t, 50t, 100t, 200t

## Location (Address)

2055-2, Sadeung-ri, Sadeung-Myeon, Geoje-si, Gyeongnam, Korea

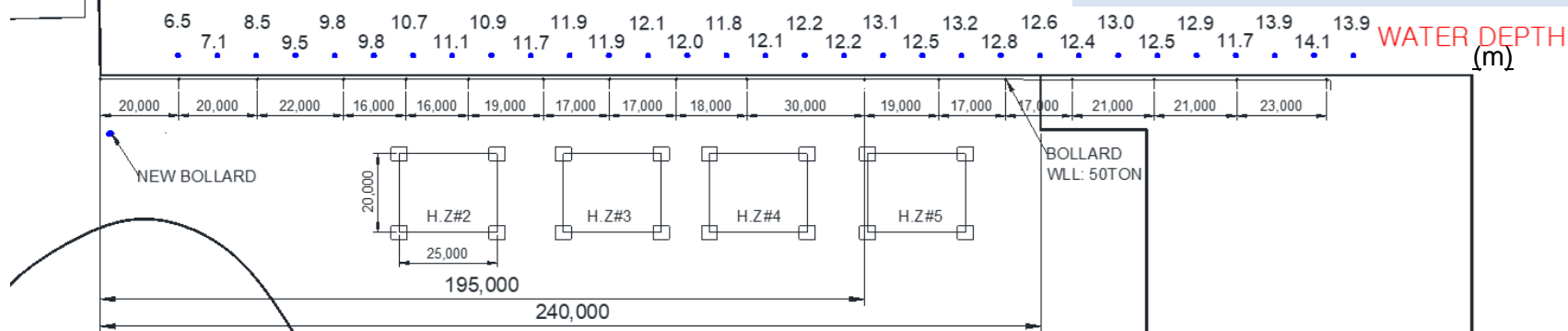
# INTRODUCTION OF HMPS SADEUNG SHIPYARD

## Layout of Shipyards

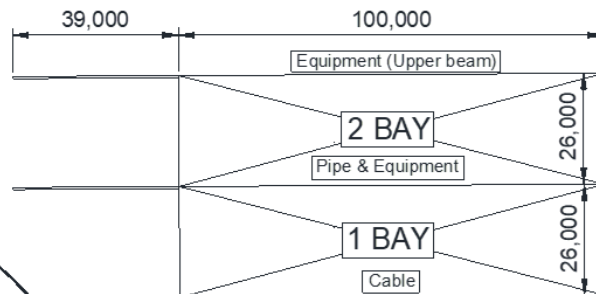
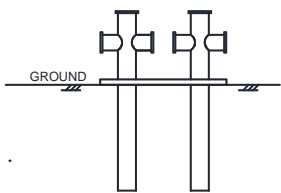


Shipyards is located at inland sea with the condition of ...

- 1) very calm sea state and
- 2) less impact by big storms such as typhoon
- 3) therefore, very safer and more comfortable place for vessel mooring



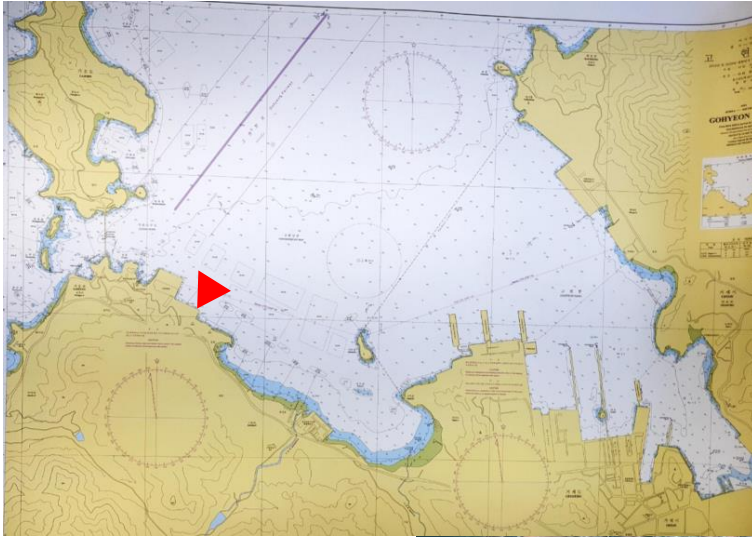
### New Bollard



# INTRODUCTION OF HMPS SADEUNG SHIPYARD



## Nautical Chart & Aerial Photo



# INTRODUCTION OF HMPS SADEUNG SHIPYARD



Reference Photo – Module Assembly





# INTRODUCTION OF HMPS SADEUNG SHIPYARD



Reference Photo – Derrick Assembly



# INTRODUCTION OF HMPS SADEUNG SHIPYARD



Reference Photo – Indoor Shops





# INTRODUCTION OF HMPS SADEUNG SHIPYARD



Reference Photo –Views from shipyard

